



13 Hammond Place Roxburgh Park VIC

4 2 2

Expression of Interest Closes on 5 June 2026 at 4.00pm (Unless sold prior)

Perfectly positioned in one of Roxburgh Park's most sought-after family pockets, 13 Hammond Place delivers the ideal blend of space, comfort, and everyday convenience designed to cater effortlessly to growing families.

Set on a generous 528m² (approx.) allotment, this beautifully maintained home offers 4 spacious bedrooms, including a private master retreat complete with ensuite and walk-in robe. The remaining 3 bedrooms are all fitted

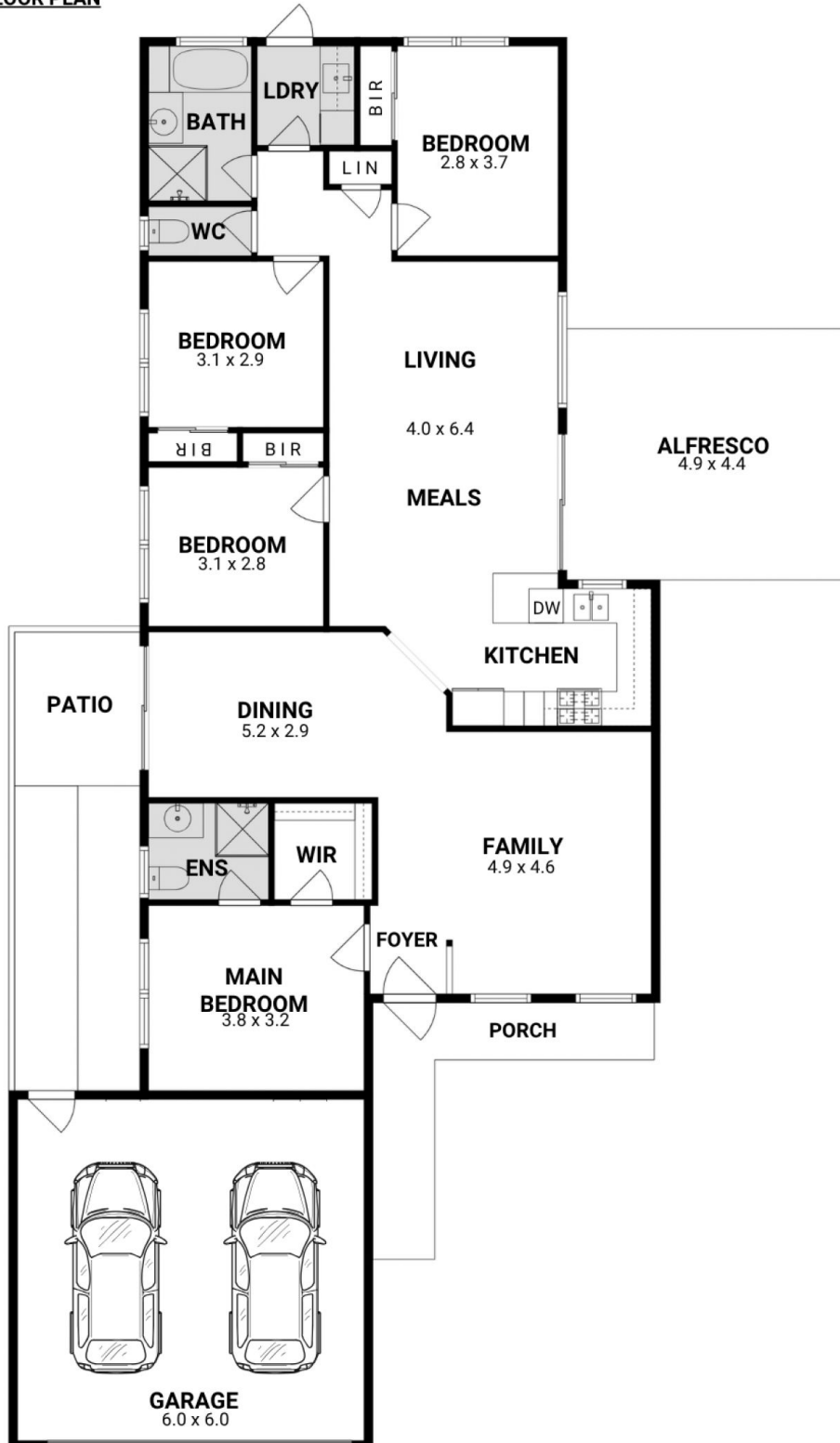
[For full version visit the website](https://www.luxepropertiesmelbourne.com.au/8669550)

Type : House
Price : EOI - \$740,000 - \$760,000
Land Size : 528 sqm
View : <https://www.luxepropertiesmelbourne.com.au/8669550>



Alex Doguluer
0434342390

FLOOR PLAN



13 Hammond Place, Roxburgh Park VIC 3064