

# LUXE

MELBOURNE



## 18 Whalan Court Pyalong VIC

3 1 15

Presenting 18 Whalan Court, Pyalong, a masterfully presented 5.08-acre (approx. 20,573m<sup>2</sup>) canvas for your perfect lifestyle. Far more than just a house on land, this is a complete turn-key sanctuary where modern comfort meets serene country living. Freshly painted and move-in ready, this versatile property welcomes you to simply unpack and start living your dream, whether that's raising a family, hosting friends, cultivating a hobby farm, or securing a lucrative investment—all within a convenient 55 minute commute of Melbourne's North.

A Charming, Light-Filled Home Designed for Living

Step into a home that feels instantly welcoming. The

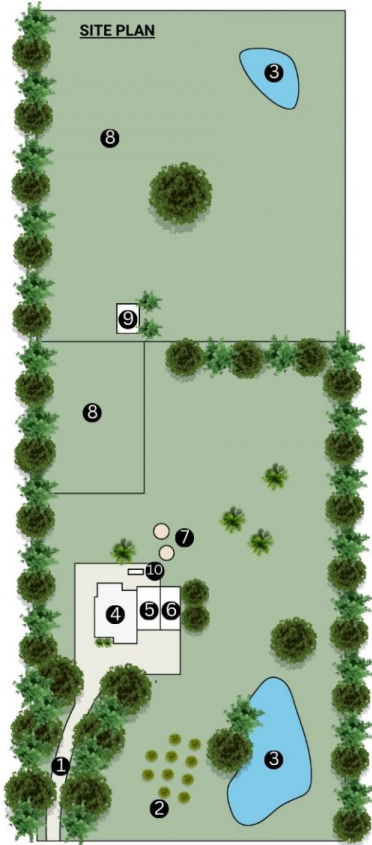
[For full version visit the website](https://www.luxepropertiesmelbourne.com.au/8569346)

**Type** : Acreage/Semi-Rural  
**Price** : \$ 870,000  
**Land Size** : 5.08 Acres  
**View** : <https://www.luxepropertiesmelbourne.com.au/8569346>



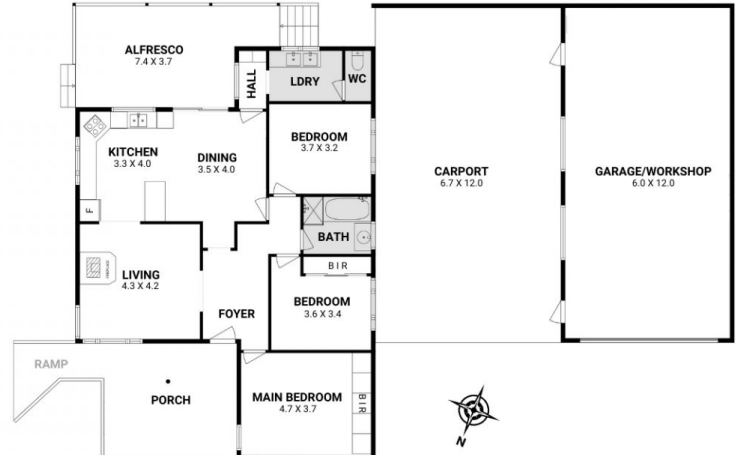
**Alex Doguluer**  
0434342390

<https://www.luxepropertiesmelbourne.com.au>



- INDEX**
- 1 Driveway
  - 2 Hobby Orchard
  - 3 Dams
  - 4 Residence
  - 5 Carport
  - 6 Garage/Workshop
  - 7 Water tanks
  - 8 Paddock
  - 9 Lean to
  - 10 Fire Pit

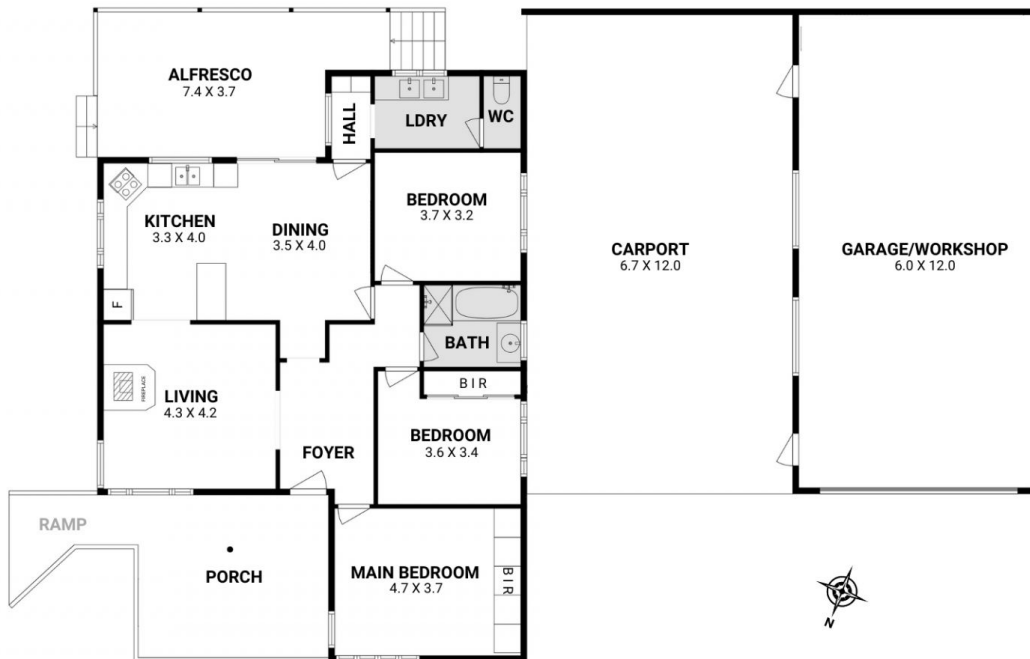
**FLOOR PLAN**



## 18 Whalan Court, Pyalong VIC 3521

Particulars herein, including floorplans, measurements, and textures, are of approximate nature and for the use of illustrative purposes only. Prospective purchasers are requested to take responsibility in obtaining independent, professional advice. ©Framework Photographer

**FLOOR PLAN**



## 18 Whalan Court, Pyalong VIC 3521

Particulars herein, including floorplans, measurements, and textures, are of approximate nature and for the use of illustrative purposes only. Prospective purchasers are requested to take responsibility in obtaining independent, professional advice. ©Framework Photographer