



1/421 Camp Road Broadmeadows VIC

2 1 2

Step inside this charming and comfortable unit that combines easy living with a prime Broadmeadows location. Perfect for first home buyers, investors, or downsizers, this home delivers comfort, practicality, and lifestyle convenience in one smart package.

Featuring two well-sized bedrooms, both with built-in robes, a separate bathroom, and a spacious lounge room ideal for relaxing or entertaining.

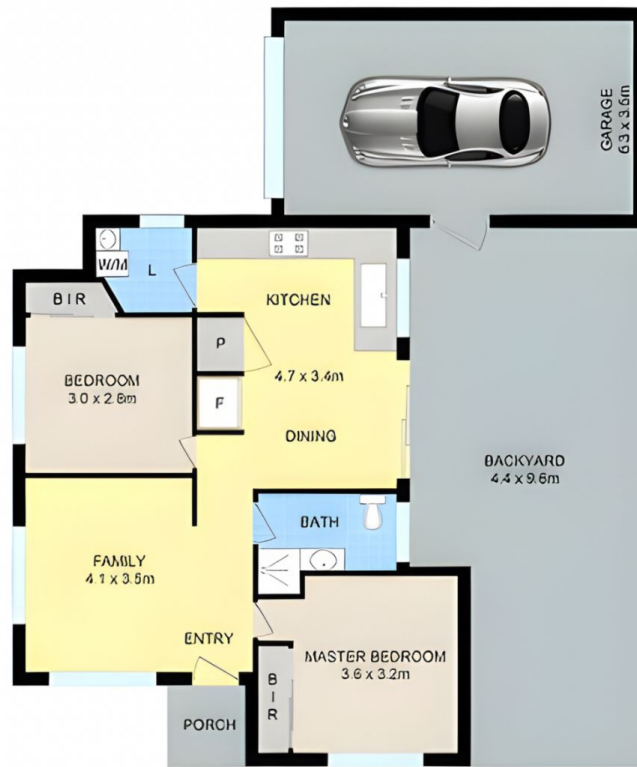
The adjoining kitchen and meals area offers plenty of natural light and functionality, while the private courtyard provides the perfect spot to unwind or enjoy a BBQ with family and friends.

[For full version visit the website](https://www.luxepropertiesmelbourne.com.au/8543849)

Type : Unit
Price : \$ 472,000
Land Size : 217 sqm
View : <https://www.luxepropertiesmelbourne.com.au/8543849>



Alex Doguluer
0434342390



1/421 Camp Road, Broadmeadows

Disclaimer: Floor plan is for marketing purposes and is to be used as a guide only. Measurements are approximate and for illustrative purposes. Interested parties should make and rely on their own enquiries or refer to contract drawings for more accurate information.