

LUXE

MELBOURNE



98 Greenvale Drive Greenvale VIC

4 4 10

Nestled in Greenvale's most prestigious precinct, this magnificent 4-bedroom plus study residence offers the ultimate family lifestyle on a generous 1,014sqm (approx.) parcel with striking 22m frontage.

The elegant semi-circular driveway provides both exceptional curb appeal and practical parking solutions. This solidly built home with suspended slab and double brick construction, providing the ideal combination of space, luxury, and convenience, perfectly suited for modern family living.

CALL ALEX ON 0434 342 390 FOR PRIVATE INSPECTION.

[For full version visit the website](https://www.luxepropertiesmelbourne.com.au)

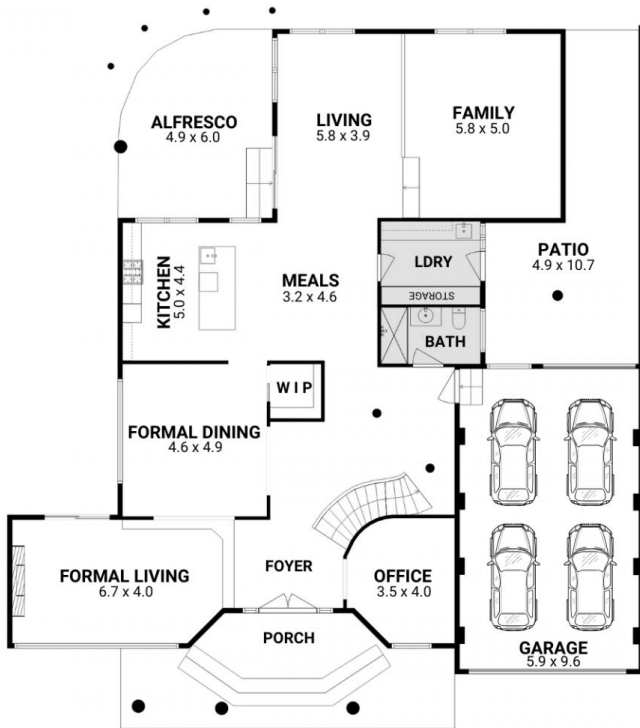
Type : House
Price : \$ 1,590,000
Building Size : 448 sqm
Land Size : 1014 sqm
View : <https://www.luxepropertiesmelbourne.com.au/8325881>



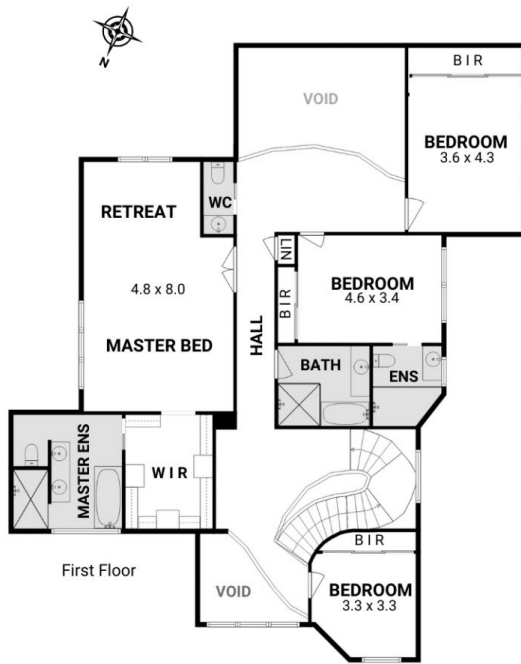
Alex Doguluer
0434342390

<https://www.luxepropertiesmelbourne.com.au>

FLOOR PLAN



Ground Floor



First Floor

98 Greenvale Drive, Greenvale VIC 3059

Particulars herein, including floorplans, measurements, and textures, are of approximate nature and for the use of illustrative purposes only. Prospective purchasers are requested to take responsibility in obtaining independent, professional advice. ©Framework Photographer

